

Product Data Sheet

One Source For VME / VME64X / CompactPCI & Prototypes
Chassis / System Enclosures, Backplanes, Subracks, Card Cages, Power Supplies
Prototype Circuit boards, Circbord®, Vectorbord®, Plugbord™, VectorPak®, Proto Tools & Accessories

[Home](#) | [Packaging Products](#) | [Prototype Products](#) | [Distributors](#) | [Product Index](#) | [Sales](#) | [Contact Us](#)

Subracks / Card Cages : CCK13, CCA13, CCM13 & CMA13 Series

Designed in accordance with EIA standard RS-310, Vector subracks and modules offer versatility within a 19" rackmount format. All racks are adjustable in both height and depth. Metal, Plastic, Snap-in, Rivet, or Screw-down card guides are available. All Subrack sizes are compatible with Vector prototyping boards (see Prototype Products Section).

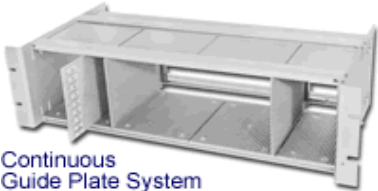


■ Subrack Kits, { CCK } Series

Part No.	Width	Height	Depth	Max. Card Size	Description
CCK13F/90	19"	3U	9"	4.5" X 6.5"	Card Cage Kit, Frame Only { No Card Guides }
CCK13S/90	19"	3U	9"	4.5" X 6.5"	Card Cage Kit With 21 Pair Plastic Snap-in Card Guides
CCK13M/90	19"	3U	9"	4.5" X 6.5"	Card Cage Kit With 21 Pair Metal Card Guides



Snap-in,
Plastic or Metal Card Guides
Fastened with Hardware

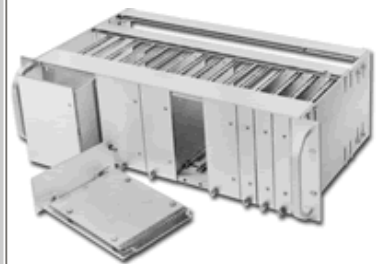


Continuous
Guide Plate System

■ Assembled Subracks, { CCA } Series with Card Guides

Part No.	Width	Height	Depth	Max. Card Size	Description
CCA13F	9"	3U	9"	4.5" X 6.5"	Card Cage Kit, Frame Only { for Screw-in Guides Only }
CCA13C/90	9"	3U	9"	4.5" X 6.5"	Assembled with Continuous Card Guide Plate
CCA13S/90	19"	3U	9"	4.5" X 6.5"	Assembled with 21 Pair Plastic Snap-in Card Guides
CCA13M/90	19"	3U	9"	4.5" X 6.5"	Assembled with 21 Pair Metal Card Guides

- Models available with Snap-in, Continuous, Metal or Plastic fastened with hardware.
- Guide positions at 0.25" increments
- Adjustable slots, horizontal or vertical
- Construction: 0.080" thick aluminum
- Sidewall slots provide adjustability to 1"
- For 4.5" x 6.5" cards; or 4.5" x 9.6" cards
- Adjustable rear struts for mounting connectors
- Continuous groove card guide plate allows maximum flexibility in card placement { CCK13C/90 Only }



■ Assembled Card Mount Module Subrack, { CCM SERIES }. CM Modules Sold Separately

Part No.	Width	Height	Depth	Max. Card Size	No. of Modules
CCM13S/90	19"	3U	9"	4.5" X 6.5"	No. varies with the width of the Modules.

- Accepts CM45A65 Card Mount Modules { Modules Available separately }
- Assembled module rack, Plastic Snap-in Guides installed on 1" ctrs., adjustable in 0.025" increments.
- Different width modules may be inserted interchangeably without guide changes
- Card mount modules (CM Series) with 1" to 4" widths{ [CM Series Modules Data Sheets](#) }
- For 3U and 4U applications
- Adjustable rear struts for connection of backplanes (struts available separately)
- For Desktop outer enclosure check our chassis / enclosures section.